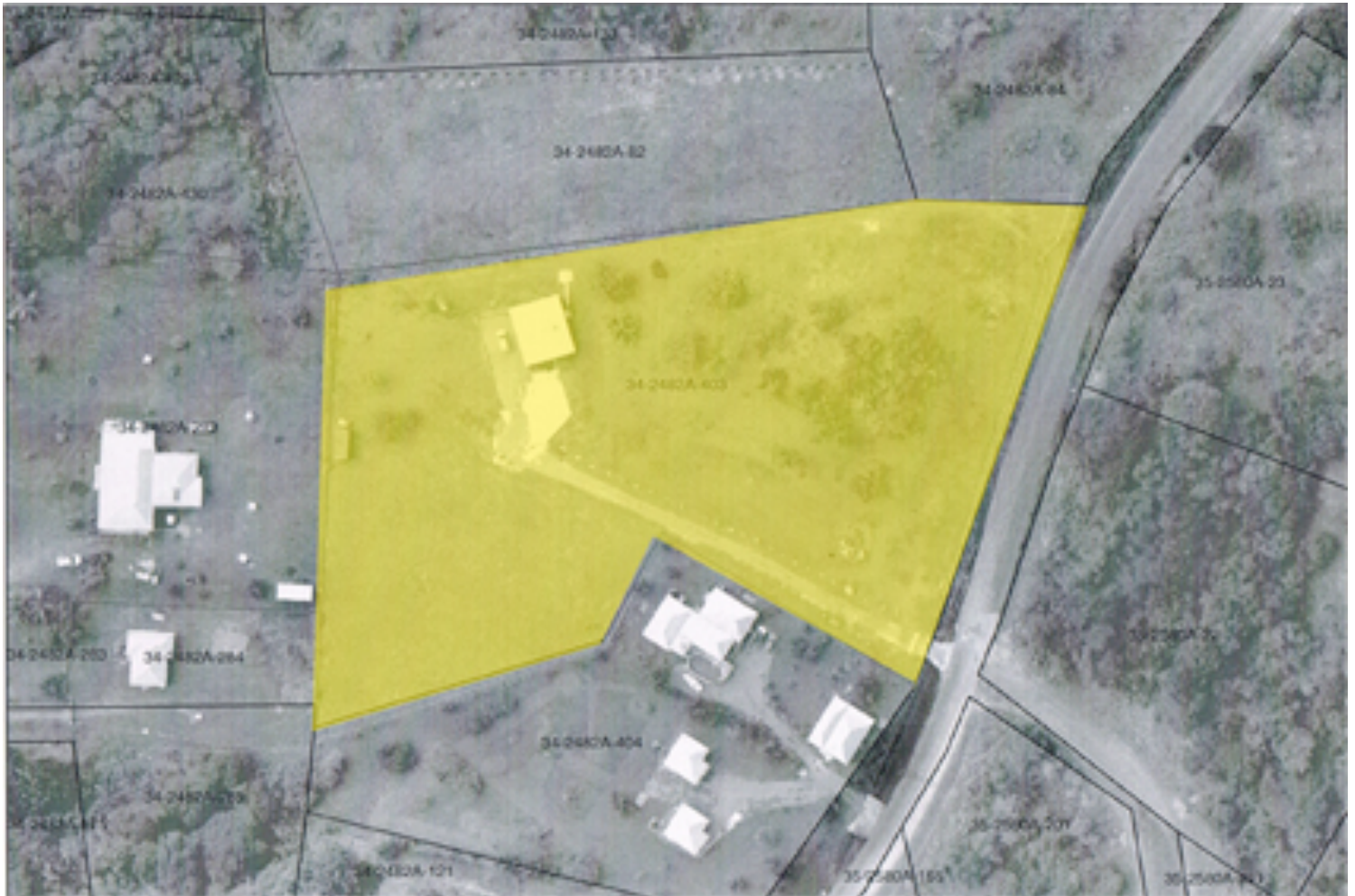




ESTATE AGENTS, VALUERS & SURVEYORS

Richard Watson MRICS - Chartered Surveyor

SELECTION OF BUILDING PLOTS PICCADILLY, ANTIGUA FROM US\$3.65 per foot.



2.6 acres of land available for development. Sea views to Falmouth and turtle bay. The site has a main access road, electricity and water laid on. One house already constructed and available to purchase. The land maybe subdivided or bought as a whole.

Prices from US\$3.65 to US\$3.95 per square foot.